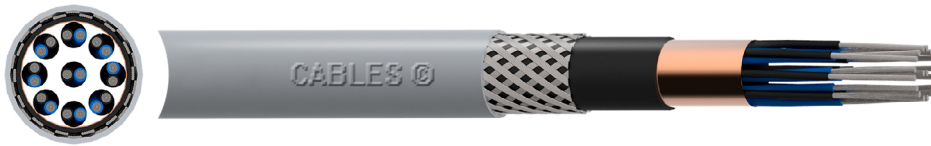


NEK606 RFOU(c) 250V S102 Cable



Product Group: ASH

APPLICATION

A flame-retardant and halogen-free collectively screened instrumentation cable designed for fixed installation in conditions where oil and gas rigs are usually working. Suitable for use in extreme temperatures, saline atmospheres, and where UV radiation, hydrocarbons, oils and drilling fluids and muds are present, meeting the requirements of NEK606.

CHARACTERISTICS

Voltage Rating U₀/U
150/250V

Maximum Operating Voltage U_{max}
300V

Temperature Rating
+90°C

Minimum Bending Radius
4 x Overall Diameter

CONSTRUCTION

Conductor

Class 2 tinned annealed copper conductor

Insulation

Halogen free EPR (Ethylene Propylene Rubber) compound

Overall Screen

Copper backed polyester tape + Tinned copper drain wire

Bedding

Halogen free compound

Screen

TCWB (Tinned Copper Wire Braid)

Sheath

SHF2 H-M compound

Core Identification

Pair: ● Black ● Light Blue

Triple: ● Black ● Light Blue ● Brown

Multi pairs/triples: Progressively numbered

Sheath Colour

● Blue ● Grey

CABLE THIRD-PARTY ACCREDITATIONS

We supply DNV approved products

Cables are tested and certified by Det Norske Veritas (Norway)

We supply Lloyds Register approved products

Cables are tested and certified by Lloyds Register (UK)

We supply ABS approved products

Cables are tested and certified by American Bureau of Shipping (USA)

STANDARDS

NEK 606, IEC 60092-376, IEC 60092-360
Flame Retardant: IEC 60332-1-2, IEC 60332-3-22 Cat A
Corrosivity: IEC 60754-1 & 2, IEC 60684-2
Smoke Density: IEC 61034-1 & 2
UV Resistance: UL 1581 & 1200
Ozone Resistance: IEC 60092-360
Mineral / Hydraulic Oils & Muds Resistant: NEK 606
Impact & Cold Resistance: CSA C 22.2 N° 0.3-09 & N° 38-18
Temperature Range: IEC 60092-360

THE CABLE LAB®

AN ISO/IEC 17025 AND IECEE CBTL ACCREDITED FACILITY

Our world-class testing facility assures the quality and compliance of this cable through a continuous and rigorous testing regime.



SUSTAINABILITY COMMITMENT

We are on a journey to Net Zero.

We've committed to near-term emissions reductions and a net-zero target with the Science Based Targets initiative and we're a signatory to the United Nations Global Compact Sustainable Development Goals.

Learn more about embodied carbon and our carbon emissions reduction actions, our comprehensive recycling services, and wider ESG activities for sustainable operations at: www.elandcables.com/company/about-us/esg-sustainability



REGULATORY COMPLIANCE

This cable meets the requirements of the RoHS Directive 2015/65/EU and Reach Directive EC 1907/2006. RoHS compliance has been tested and confirmed by The Cable Lab®.



DIMENSIONS

PART NO.	NO. OF PAIRS/TRIPLES	NOMINAL CROSS SECTIONAL AREA mm ²	NOMINAL DIAMETER UNDER ARMOUR mm	NOMINAL OVERALL DIAMETER mm	NOMINAL WEIGHT kg/km
ASHNRC0275**	2P	0.75	11.0	15.5	390
ASHNRC0210**	2P	1.0	12.0	16.7	450
ASHNRC0215**	2P	1.5	13.2	17.9	525
ASHNRC0225**	2P	2.5	14.6	20.2	630
ASHNRC2T75**	2T	0.75	12.0	16.7	455
ASHNRC1610**	2T	1.0	13.1	17.8	520
ASHNRC2T15**	2T	1.5	14.4	20.0	615
ASHNRC3T75**	3T	0.75	12.6	17.4	500
ASHNRC3T10**	3T	1.0	13.8	18.6	575
ASHNRC3T15**	3T	1.5	15.3	20.8	700
ASHNRC0475**	4P	0.75	12.6	17.4	500
ASHNRC0410**	4P	1.0	13.8	18.6	570
ASHNRC0415**	4P	1.5	15.3	21.0	700
ASHNRC0425**	4P	2.5	17.0	22.8	850
ASHNRC4T75**	4T	0.75	13.8	18.8	585
ASHNRC4T10**	4T	1.0	15.2	20.9	690
ASHNRC4T15**	4T	1.5	16.8	22.5	830
ASHNRC4T25**	4T	2.5	18.7	24.5	1025
ASHNRC0775**	7P	0.75	15.0	20.8	675
ASHNRC0710**	7P	1.0	16.5	22.4	785
ASHNRC0715**	7P	1.5	18.3	24.3	960
ASHNRC7T75**	7T	0.75	17.1	23.1	845
ASHNRC7T10**	7T	1.0	18.9	25.1	1005
ASHNRC7T15**	7T	1.5	21.0	27.2	1230
ASHNRC0875**	8P	0.75	16.0	21.9	750
ASHNRC0810**	8P	1.0	17.6	23.7	885
ASHNRC0815**	8P	1.5	19.5	25.9	1090
ASHNRC0825**	8P	2.5	21.9	28.2	1360
ASHNRC8T75**	8T	0.75	18.3	24.5	950
ASHNRC8T10**	8T	1.0	20.2	26.6	1130
ASHNRC8T15**	8T	1.5	22.5	28.9	1390
ASHNRC8T25**	8T	2.5	25.7	28.3	1505
ASHNRC1275**	12P	0.75	18.9	25.3	1005
ASHNRC1210**	12P	1.0	20.9	27.3	1185
ASHNRC1215**	12P	1.5	23.7	30.3	1515
ASHNRC1225**	12P	2.5	26.6	33.2	1910
ASHNRC12T75**	12T	0.75	21.4	28.0	1255
ASHNRC12T10**	12T	1.0	24.1	30.6	1530
ASHNRC12T15**	12T	1.5	26.9	33.9	1940
ASHNRC1675**	16P	0.75	21.8	28.4	1270
ASHNRC1610**	16P	1.0	24.1	30.7	1515
ASHNRC1615**	16P	1.5	26.9	33.9	1905
ASHNRC16T75**	16T	0.75	24.7	31.4	1600
ASHNRC16T10**	16T	1.0	27.3	34.3	1925
ASHNRC16T15**	16T	1.5	30.5	38.2	2515

The information contained within this datasheet is for guidance only and is subject to change without notice or liability. All the information is provided in good faith and is believed to be correct at the time of publication. When selecting cable accessories, please note that actual cable dimensions may vary due to manufacturing tolerances.

PART NO.	NO. OF PAIRS/TRIPLES	NOMINAL CROSS SECTIONAL AREA mm ²	NOMINAL DIAMETER UNDER ARMOUR mm	NOMINAL OVERALL DIAMETER mm	NOMINAL WEIGHT kg/km
ASHNRC1975**	19P	0.75	23.5	30.3	1465
ASHNRC1910**	19P	1.0	26.0	32.7	1730
ASHNRC1915**	19P	1.5	29.0	36.1	2170
ASHNRC19T75**	19T	0.75	26.6	33.6	1835
ASHNRC19T10**	19T	1.0	29.4	36.9	2230
ASHNRC19T15**	19T	1.5	32.9	40.9	2890
ASHNRC2475**	24P	0.75	26.1	33.1	1765
ASHNRC2410**	24P	1.0	28.8	36.2	2135
ASHNRC2415**	24P	1.5	32.7	40.8	2815
ASHNRC24T75**	24T	0.75	29.5	37.0	2240
ASHNRC24T10**	24T	1.0	33.1	41.3	2840
ASHNRC24T15**	24T	1.5	37.1	45.6	3615
ASHNRC3275**	32P	0.75	29.6	37.0	2215
ASHNRC3210**	32P	1.0	33.2	41.3	2805
ASHNRC3215**	32P	1.5	37.1	45.5	3520
ASHNRC32T75**	32T	0.75	34.0	42.3	2970
ASHNRC32T10**	32T	1.0	37.7	46.2	3585
ASHNRC32T15**	32T	1.5	42.3	51.0	4560

P = Pairs

T = Triples

Part No. shown above designate the gland colour (). For each colour substitute * for a colour code as listed below. e.g. ASHNRC0275GR = 0.75mm² Grey

COLOUR CODES

COLOUR	Grey	Blue
CODE	GR	BL

ELECTRICAL CHARACTERISTICS - PAIRS

NOMINAL CROSS SECTIONAL AREA mm ²	MAX. CONDUCTOR RESISTANCE Ω/km		REACTANCE Ω/km		MAX. CAPACITANCE μF/Km	NOMINAL INDUCTANCE μH/Km	IMPEDANCE @ 50 & 60 HZ Ω/km		MAX. L/R RATIO @ 1KHZ μH/Ω
	20°C	90°C	50 HZ	60 HZ			20°C	90°C	
0.75	26.3	33.5	0.106	0.127	0.09	336	26.3	33.5	12.8
1.0	19.3	24.6	0.098	0.118	0.095	312	19.3	24.6	16.2
1.5	12.9	16.5	0.099	0.118	0.1	314	12.9	16.5	24.3

ELECTRICAL CHARACTERISTICS - TRIPLES

NOMINAL CROSS SECTIONAL AREA mm ²	MAX. CONDUCTOR RESISTANCE Ω/km		REACTANCE Ω/km		MAX. CAPACITANCE μF/Km	NOMINAL INDUCTANCE μH/Km	IMPEDANCE @ 50 & 60 HZ Ω/km		MAX. L/R RATIO @ 1KHZ μH/Ω
	20°C	90°C	50 HZ	60 HZ			20°C	90°C	
0.75	26	33.5	0.106	0.127	0.09	336	26.3	33.5	12.8
1.0	19.3	24.6	0.098	0.118	0.095	312	19.3	24.6	16.2
1.5	12.9	16.5	0.099	0.118	0.1	314	12.9	16.5	24.3

The information contained within this datasheet is for guidance only and is subject to change without notice or liability. All the information is provided in good faith and is believed to be correct at the time of publication. When selecting cable accessories, please note that actual cable dimensions may vary due to manufacturing tolerances.